

PRE-CHECK

1. ACTIVE ARMING MODE:

SETTING THE THEFT DETERRENT MODE

The system will be automatically set to the theft deterrent mode about 30 seconds after the setting process listed below are performed.

Setting Processes: (do processes (1) ~ (4) in the order)

- (1) Remove the ignition key from the key cylinder.
- (2) Close all entry points (door, hood and back door).
- (3) Use any one of the following methods to lock all the doors depending on a given condition.
 - Use the key to lock the driver or passenger side door or back door. (as a result, all the doors(including the engine hood and luggage compartment door) will be closed and locked), or
 - Use the remote control to lock any door (as a result, all the doors(including the engine hood and luggage compartment door) will be closed and locked), or
 - If the front right or left door is unlocked when both the rear doors are already locked, lock and close the remaining unlocked door by hand (as a result, all the doors(including the engine hood and luggage compartment door) will be closed and locked).
 - Close all doors and locked with the engine hood or luggage compartment door opened, and close the engine hood or all the doors(including the engine hood and back door) will be closed and locked).
- (4) About 30 seconds after the above process (3), the theft deterrent mode will automatically start.

HINT:

The closing/locking of all the entry points (doors, hood and back door) must remain unchanged for about 30 seconds, the system will start the theft deterrent mode.

2. PASSIVE ARMING MODE:

SETTING THE THEFT DETERRENT MODE

The system will be automatically set to the theft deterrent mode about 30 seconds after the setting process listed below are performed.

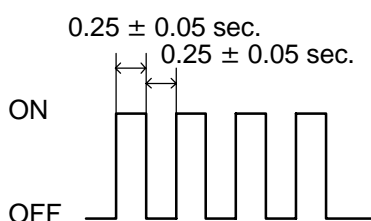
Setting Processes:

- (1) Remove the ignition key from the key cylinder.
- (2) Open and close driver door.
- (3) Close any entry points (door, hood and back door).
- (4) About 30 seconds after the above process-(3), the theft deterrent mode will automatically start.

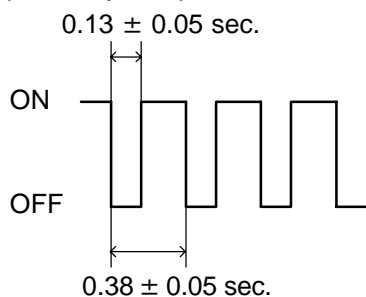
HINT:

If, while following above steps, you use the key or the remote control to lock the door, the system will be set to ACTIVE ARMING MODE.

Horns sounding and lights flashing pattern



Output of key lock pattern



I00228

3. THEFT DETERRENT OPERATION

When the system is set to the theft deterrent mode and any of the following conditions are met, the system sounds the horns and flashes the headlights and the taillights for approx. 1 minute. At the same time the system locks all doors (If all door are not locked at once, the system repeats door locking operation every 0.38 seconds during the one minute alarm time).

Condition

- (1) Any of the doors (Including the engine hood and luggage compartment door) is unlocked or opened without the key.*¹
- (2) The battery terminal is disconnected and reconnected.*²

*¹: Only active arming mode.

*²: When the ignition key is not inserted in the key cylinder.

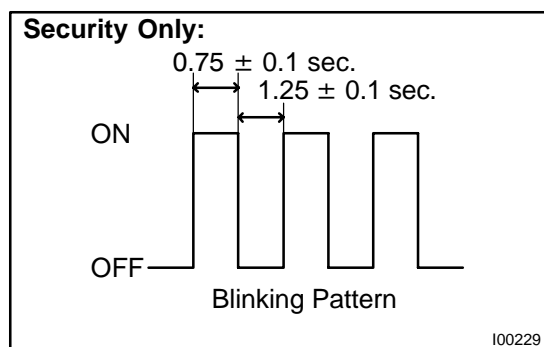
4. CANCELLATION OF THEFT DETERRENT OPERATION OR MODE

The theft deterrent operation or mode can be cancelled when any of the following conditions is met.

No.	Condition	Cancel of Operation	Cancel of Mode
1	Unlock front door with the key	Effective	Effective
2	Unlock doors with remote keyless entry	Effective	Effective
3	Insert key into ignition key cylinder and turn it to ON position	Effective	Effective
4	About 1 minute passes after theft deterrent operation begins	Automatic stop* ¹	-
5	Unlock the luggage compartment door with the key.	Effective	Effective
6	Unlock the back door.	Effective	Effective
7	If the system receives panic signal again when the system is activated by panic signal	Effective* ²	Uneffective
6	If the system receives unlock signal when the system is activated by panic signal	Effective	Effective

*¹: The system is set to the theft deterrent mode again in approx. 2 seconds after the operation stops.

*²: The alarm by the panic signal becomes the previous condition.



5. INDICATOR LIGHT (LED)

The indicator light functions as shown below according to the system condition in the theft deterrent mode. It remains off in the initial state.

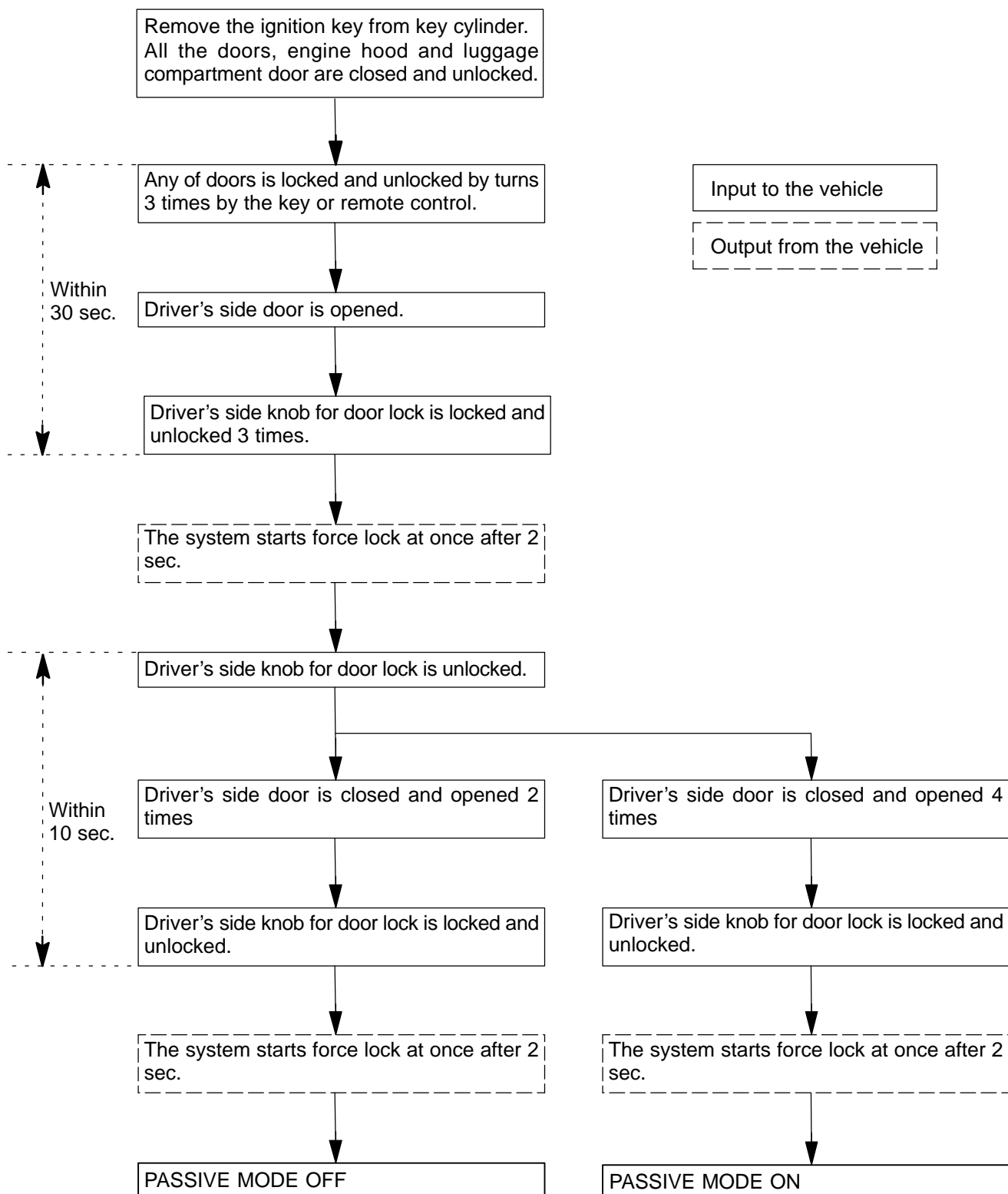
System Condition	Indicator Light
During set preparation time	ON
When the mode is set*	OFF
When alarm is activated	ON
When is the system temporally cancelled*	OFF

*: By the following 2 cases, the indicator flashes with the output from the immobiliser.

6. KEEPING POWER SUPPLY FUNCTION IN CASE OF DOME FUSE OPEN

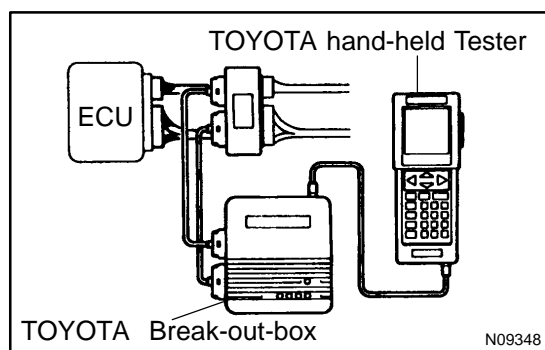
Even if the dome fuse blows open on the theft deterrent mode, the system will keep working on the theft deterrent mode.

7. CHANGING METHOD OF PASSIVE MODE (ON or OFF)



HINT:

- Initial mode is PASSIVE MODE OFF.
- If there is a different signal in the middle of changing. It is invalied.



8. ECU TERMINAL VALUES MEASUREMENT BY USING TOYOTA BREAK-OUT-BOX AND TOYOTA HAND-HELD TESTER

- (a) Hook up the TOYOTA break-out-box and TOYOTA hand-held tester to the vehicle.
- (b) Read the ECU input/ output values by following the prompts on the tester screen.
- (c) Please refer to the TOYOTA hand-held tester has a "Snapshot" function. This records the measured data and is effective in the diagnosis of intermittent problems.